
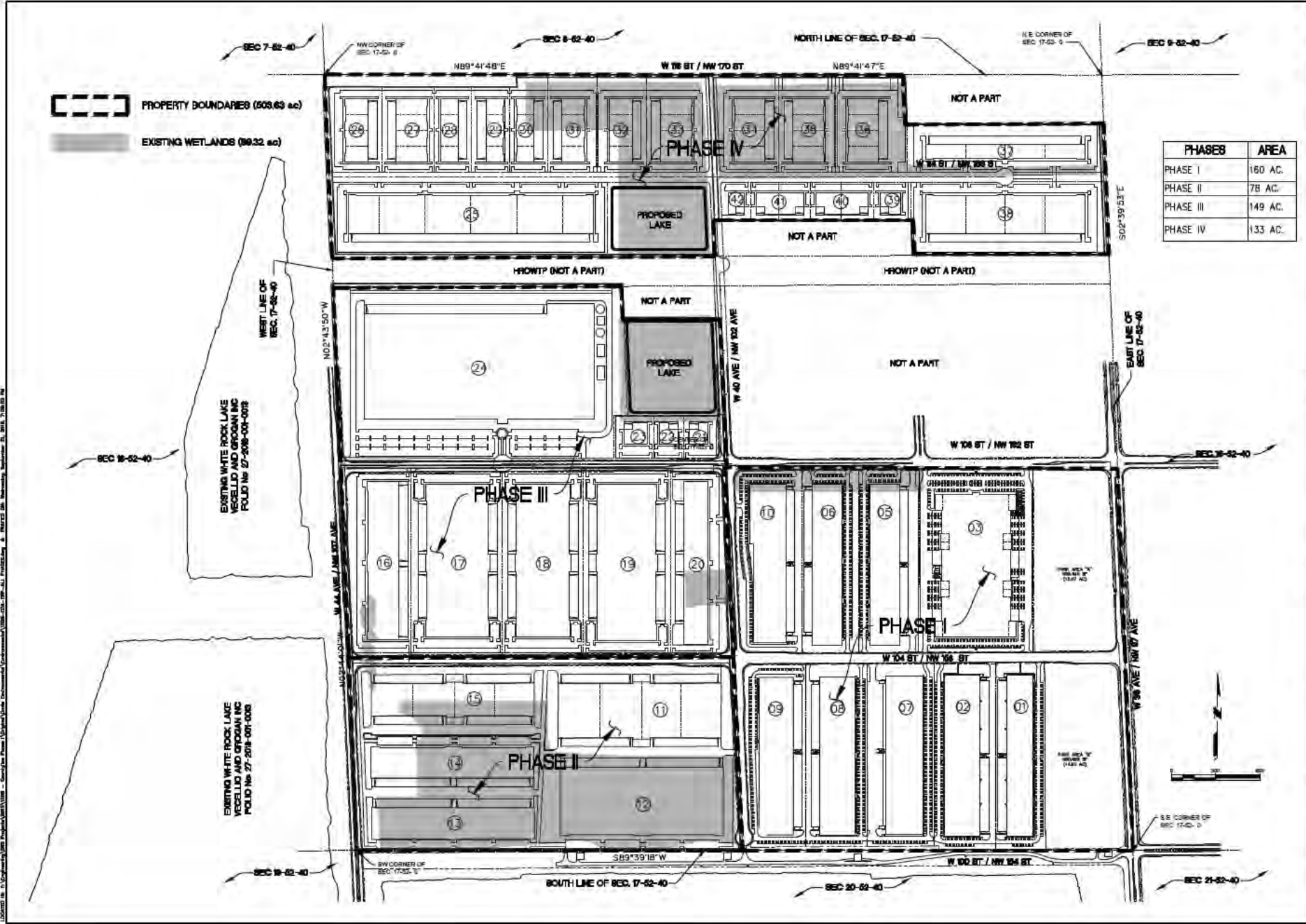
 PROPERTY BOUNDARIES (503.63 ac)
 EXISTING WETLANDS (89.32 ac)



PHASES	AREA
PHASE I	160 AC.
PHASE II	78 AC.
PHASE III	149 AC.
PHASE IV	133 AC.



PROJECT NAME
**COUNTYLINE
 CORPORATE PARK**
 CITY OF HIALEAH, FLORIDA
 CLIENT
FLAGLER GLOBAL LOGISTICS

SHEET TITLE
MASTER SITE PLAN

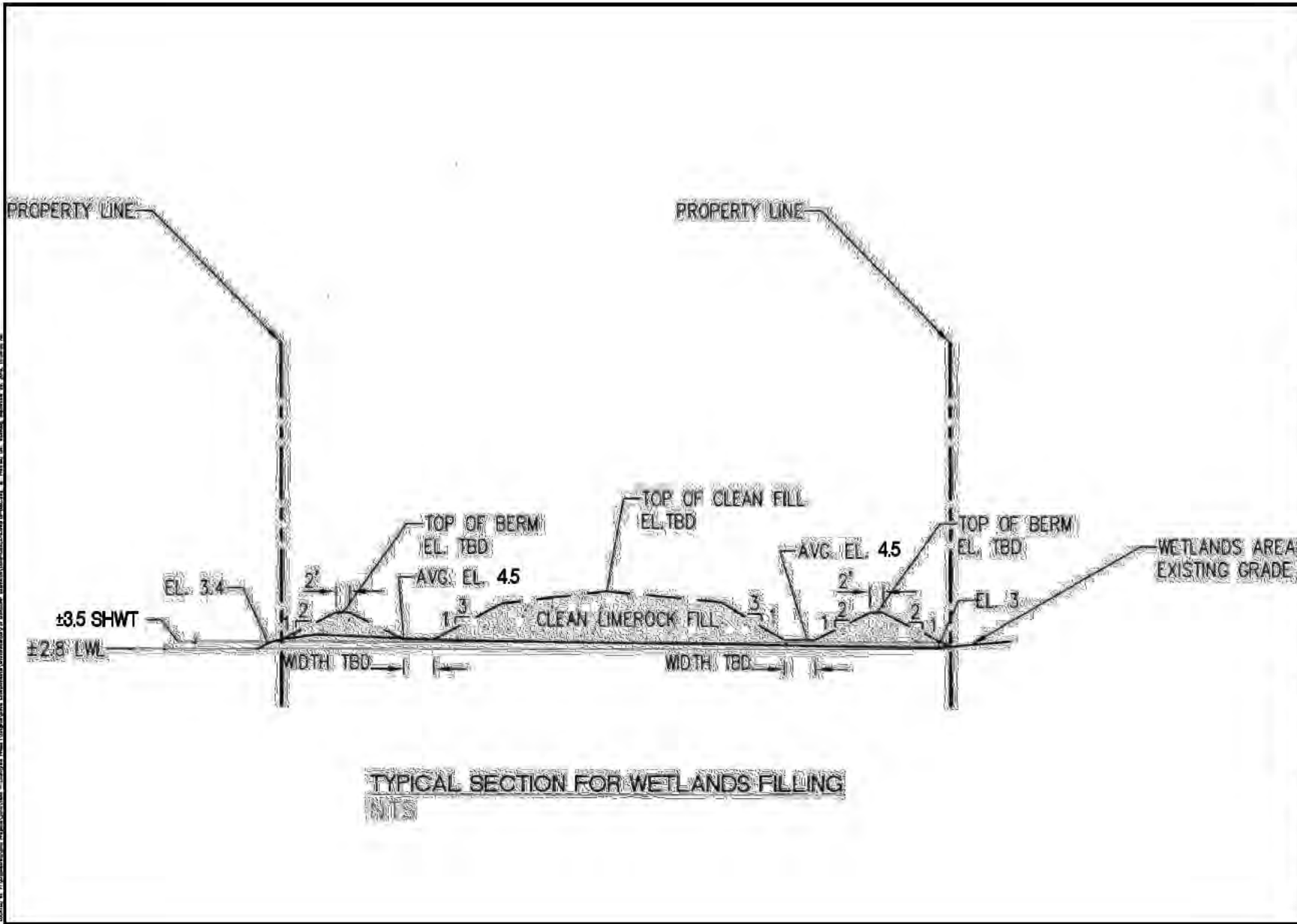
SCALE

S.R.S. PROJ. No.: 1508
 DATE: 09-14-18
 DRAWN BY: A.M.
 DESIGNED BY: M.G.
 CHECKED BY: D.S.

REVISIONS:

NO.	DATE	DESCRIPTION

SHEET
EX-A



TYPICAL SECTION FOR WETLANDS FILLING
N/S



PROJECT NAME
**COUNTYLINE
 CORPORATE PARK**
 CITY OF HALEAH, FLORIDA
 CLIENT
 FLAGLER GLOBAL LOGISTICS

SHEET TITLE
**TYPICAL SECTION
 FOR
 WETLAND FILLING**

SEAL

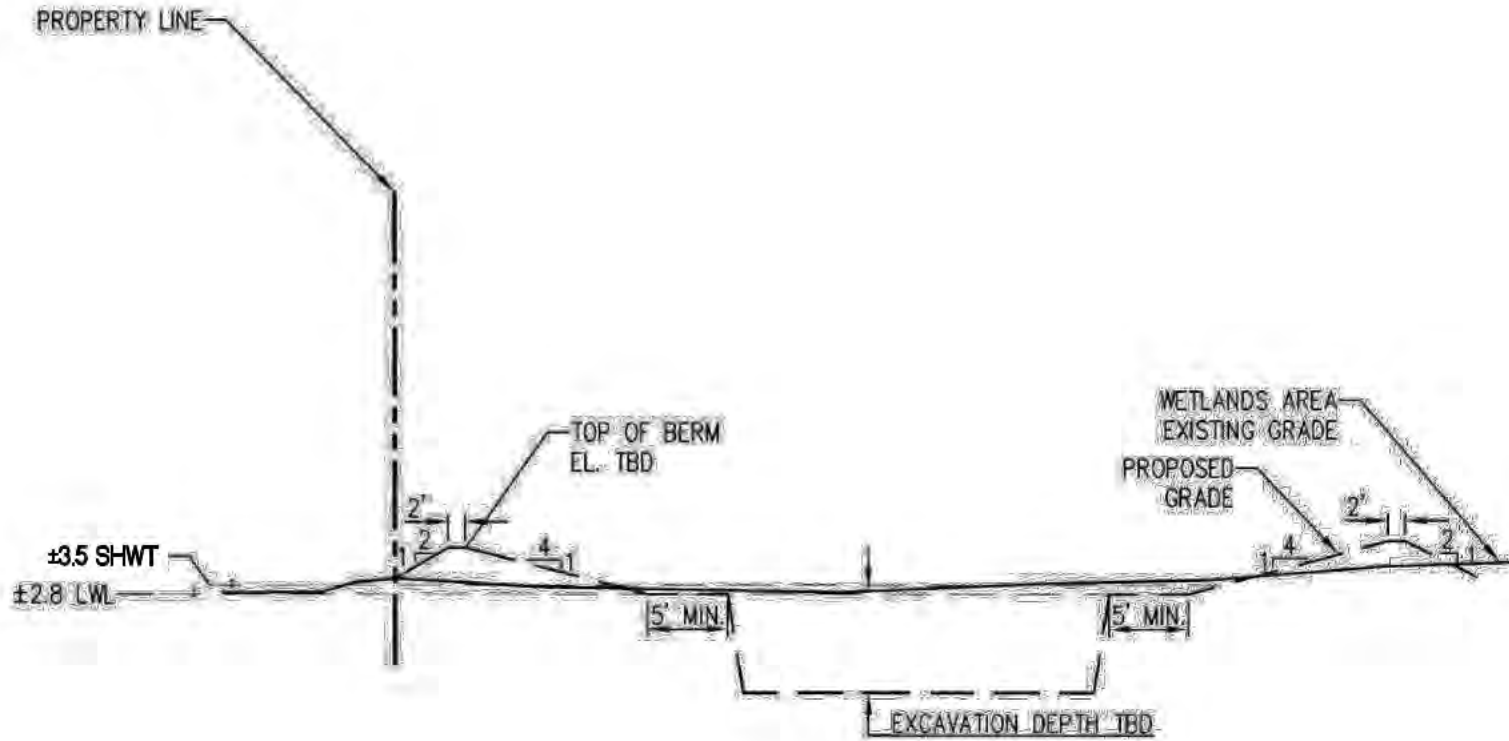
S.R.S. PROJ. No.: 1508
 DATE: 08-28-2018
 DRAWN BY: A.M.
 DESIGNED BY: M.J.
 CHECKED BY: O.S.

NO.	DESCRIPTION	DATE

SHEET
EX-B

10/12/18 11:15 AM C:\Users\mjb\OneDrive\Documents\Projects\Countyline Corporate Park\Countyline Corporate Park.dwg (PLOT) 10/12/18 11:15 AM

D:\Projects\18101\18101-0000\18101-0000-0001.dwg - 18101-00-01.dwg 11/13/18 10:11:51 AM



TYPICAL SECTION FOR WETLANDS EXCAVATION

NTS



PROJECT NAME
**COUNTYLINE
CORPORATE PARK
CITY OF HALEAH, FLORIDA**

CLIENT
FLAGLER GLOBAL LOGISTICS

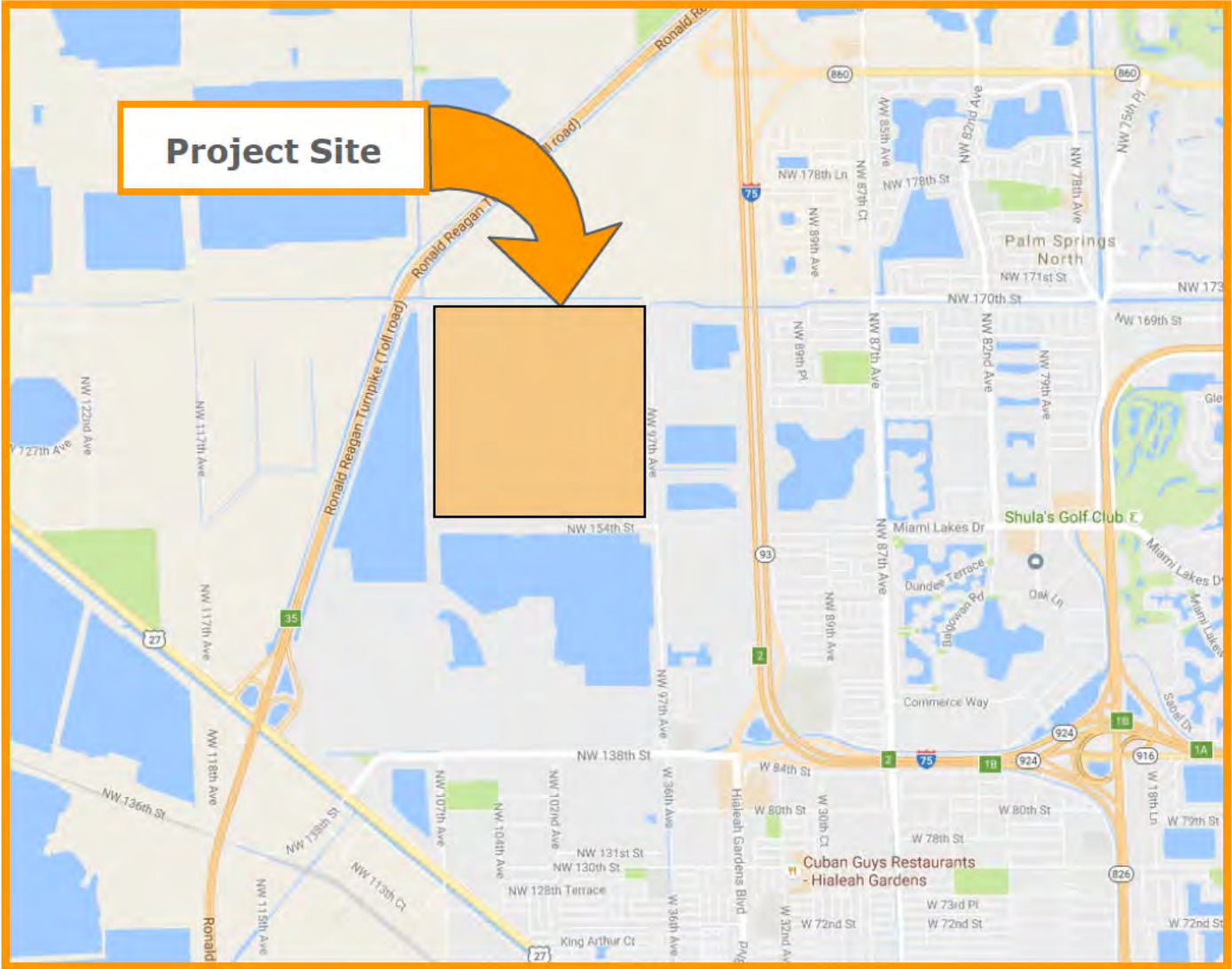
SHEET TITLE
**TYPICAL SECTION
FOR
WETLANDS
EXCAVATION**

SEAL

S.R.S. PROJ. No.: **1508**
DATE: **08-28-2018**
DRAWN BY: **AM**
DESIGNED BY: **M.O.**
CHECKED BY: **O.S.**

NO.	DATE	DESCRIPTION	BY

SHEET
EX-C



CONSULTING
ENGINEERS



5001 SW 74th COURT, SUITE 201, MIAMI, FLORIDA 33155
TEL: 305-662-8887 FAX: 305-662-8858 EB-00007317

WWW.SRS-CORP.COM

COUNTYLINE CORPORATE PARK
Hialeah, Florida
LOCATION MAP
(EX-D)



SUBJECT WETLAND FILL/EXCAVATION CALCS	BY M.D.G.	DATE 9/29/16	JOB NO. 1508	SHEET
--	--------------	-----------------	-----------------	-------

OVERALL WETLAND AREA = 99.32 Ac.

WETLAND AREA TO BE FILLED = 86.54 Ac

WETLAND AREA TO BE EXCAVATED (LAKE) = 12.78 Ac.

- MUCK REMOVAL = $\pm 3.5'$ N.G.V.D. - 0.00 N.G.V.D.

$$3.5' \times 99.32 \text{ Ac.} = 347.2 \text{ Ac-FT} = \underline{560,826 \text{ YD}^3}$$

- EXCAVATED MATERIAL = 0.00 N.G.V.D. - (-6.5 N.G.V.D.) = 6.5'
(PROP. LAKE AREA)

$$6.5' \times 12.78 \text{ Ac} = 83.07 \text{ Ac-FT} = \underline{134,020 \text{ YD}^3}$$

- FILL MATERIAL = 0.00 N.G.V.D. TO 6.9' N.G.V.D. (MIAMI-DADE FLOOD CRITERIA)

$$6.9 \times 86.54 \text{ Ac.} = 597.13 \text{ Ac-FT} = \underline{963,364 \text{ YD}^3}$$